



Addison Terrace, London, W4 5RF

Guide Price £875,000

WHITMAN & CO.

SALES · LETTINGS · COMMERCIAL

- Extended Victorian terraced house
- South facing garden
- 24' Through reception room
- Three beds/two baths
- Central location close to numerous amenities
- No onward chain

Tenure - Freehold
Local authority - Hounslow
Council tax - Band F

THE PROPERTY

An extended Victorian terraced period house ideally situated in this central Chiswick location a stone's throw from Chiswick High Road. The accommodation comprises a primary bedroom with ensuite shower room, two further double bedrooms, family bathroom, 24' through reception room, fully integrated kitchen/breakfast room, cloakroom, polished oak flooring, underfloor heating, south facing garden. Located within close proximity of Chiswick Park and Gunnersbury stations, Chiswick Business Park and the extensive shopping and restaurant facilities on Chiswick High Road. Vehicular access into central London, Heathrow and the West via the A4/M4. No onward chain.

Addison Terrace, Chiswick Road, W4

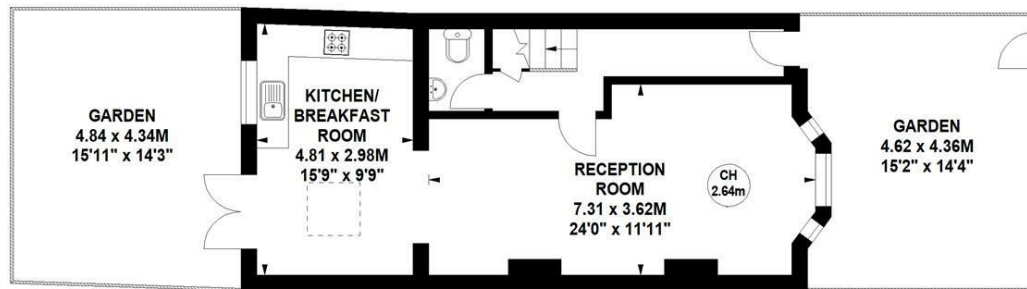
Approximate gross internal area
113.15 sq m / 1218 sq ft



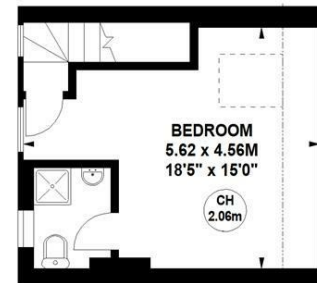
Key :
CH - Ceiling Height



First Floor



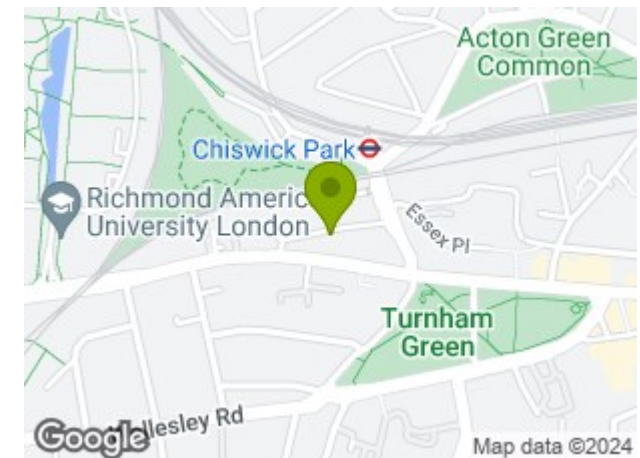
Ground Floor



Second Floor

Not to scale, for guidance only and must not be relied upon as a statement of fact.
All measurements and areas are approximate only

SITUATION



5-7 Turnham Green Terrace, Chiswick, London, W4 1RG

Tel 020 8747 8800

E-mail sales@whitmanandco.com

Website www.whitmanandco.com